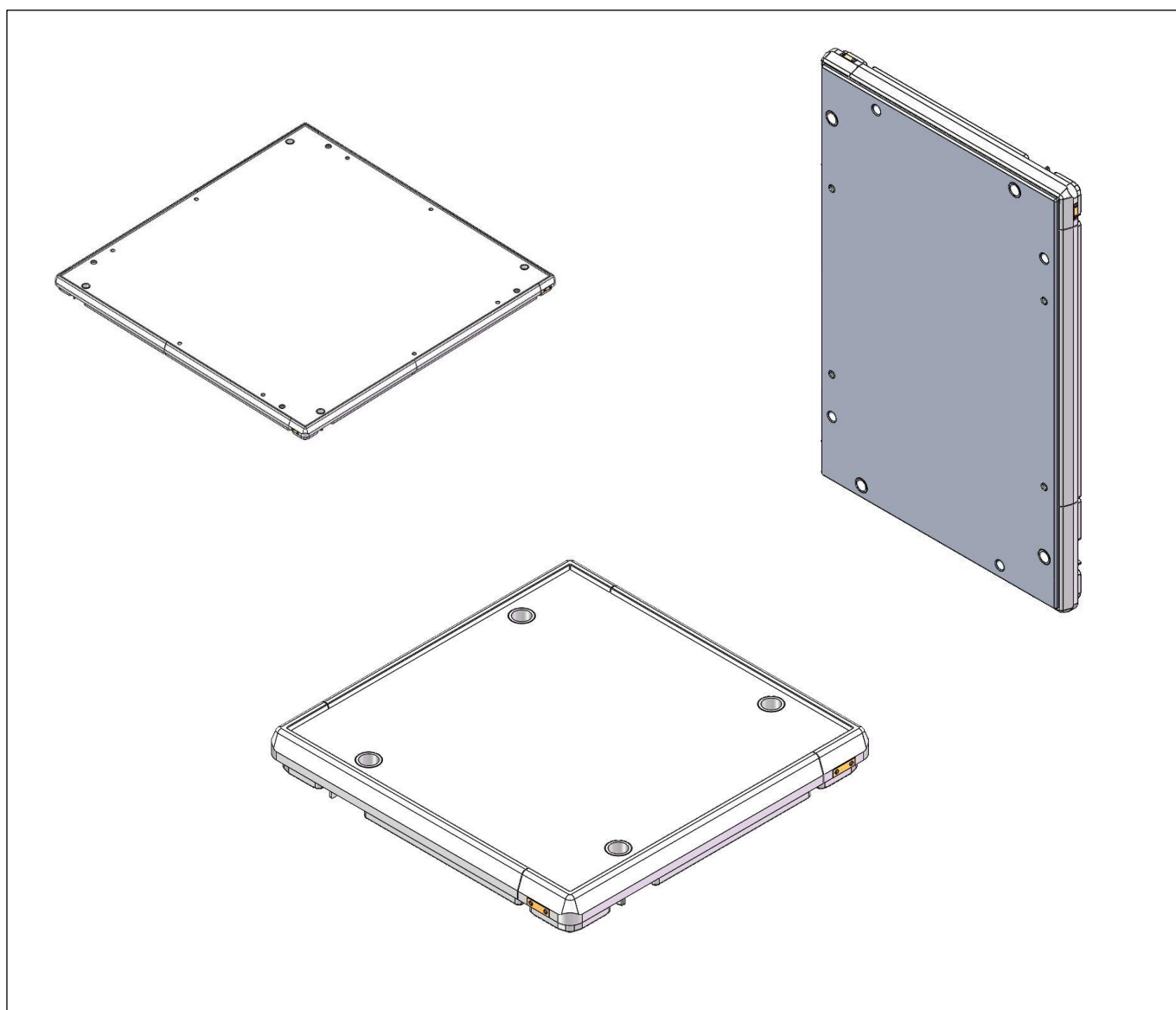


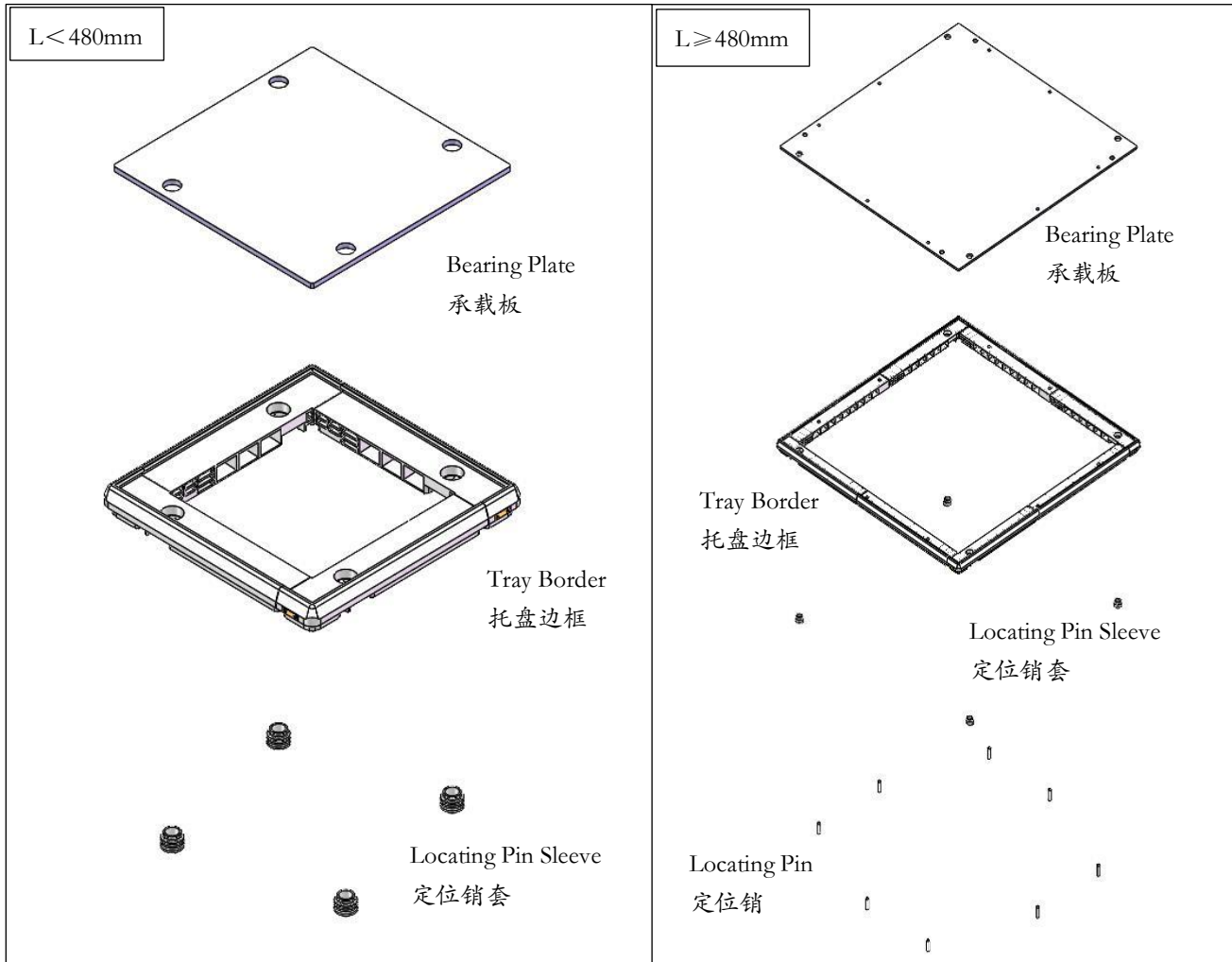
**WP2 Workpiece Tray**  
**Instruction & Maintenance Manual**  
**WP2 工件托盘安装使用维护手册**



Suzhou LinkedGo Transfer System Co.,Ltd.

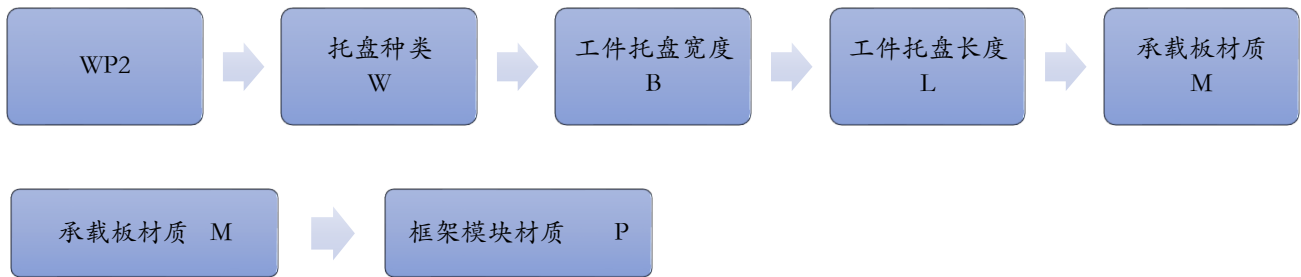
苏州领科工业技术有限公司

## Structure Diagram 结构示意图



- 1、 Workpiece pallets (WP2) are used in the conveying system to transport workpieces to various processing stations.
- 1、 输送系统中使用工件托盘 (WP2) 以将工件传送到各个加工工位。
- 2、 Material: Frame module polyamide (PA) wear-resistant pad; Polyethylene (PE) wear-resistant pad.
- 2、 材质：框架模块聚酰胺 (PA) 耐磨垫；聚乙烯 (PE) 耐磨垫。
- 3、 Bearing plate: steel (5mm), aluminum (8mm, 12mm)
- 3、 承载板：钢制 (5mm)，铝制 (8mm、12mm)
- 4、 The effective width of the workpiece tray is 160-640mm, and the effective length is 160-640mm. It can be customized according to customer requirements.
- 4、 工件托盘有效宽度为 160-640mm：有效长度为：160-640mm，可根据客户要求定制。

Model Description 型号说明



例：WP 2-WB-B320xL640-M=AL-T5-P1

Model WP 2-WB-B320xL640-M=AL-T5-P1, indicating a workpiece tray width of 320mm, a workpiece tray length of 640mm, an aluminum bearing plate material with a thickness of 5mm, and a frame module made of polyamide PA.  
 型号 WP 2-WB-B320xL640-M=AL-T5-P1, 表示工件托盘宽度 320mm, 工件托盘长度 640mm, 承载板材质为铝制, 厚 5mm, 框架模块聚酰胺 PA。

产品特征

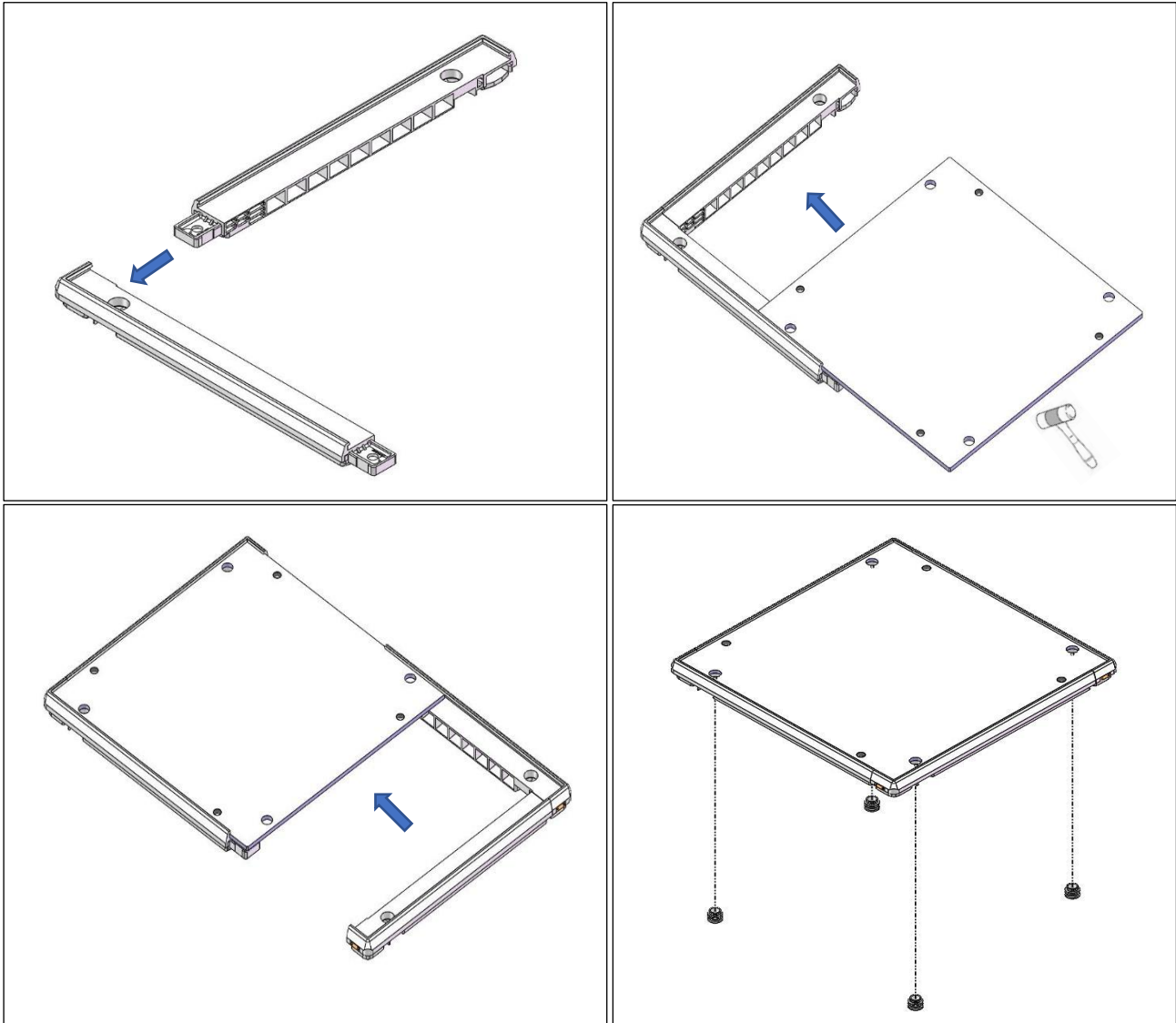
安装步骤

维护保养

安装步骤 Installation steps

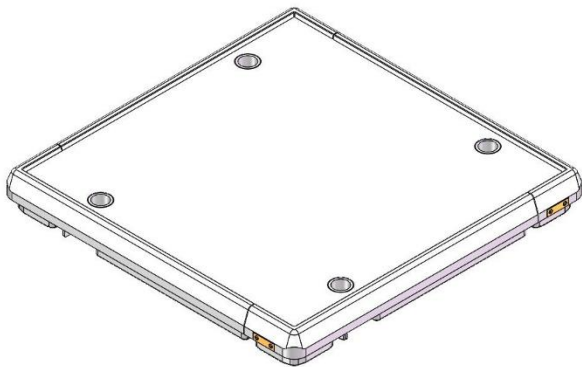
A When  $L < 480\text{mm}$ , the tray installation is shown in the following figure.

A 当  $L < 480\text{mm}$  的时候，托盘安装如下图所示。



Attention: Please use a dedicated pressing auxiliary core rod when installing the pin sleeve!

注意：销套安装的时候请用专用的压装辅助芯棒！



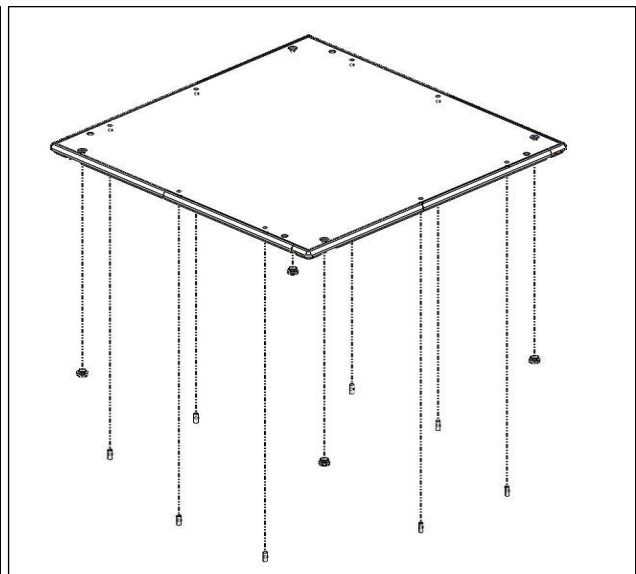
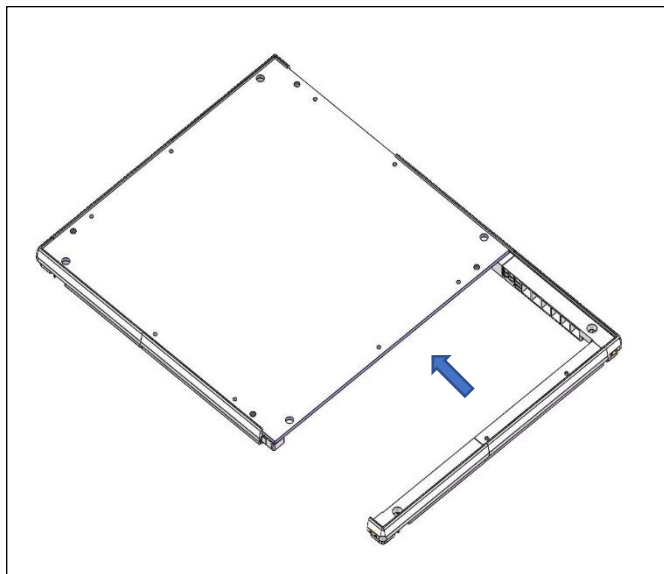
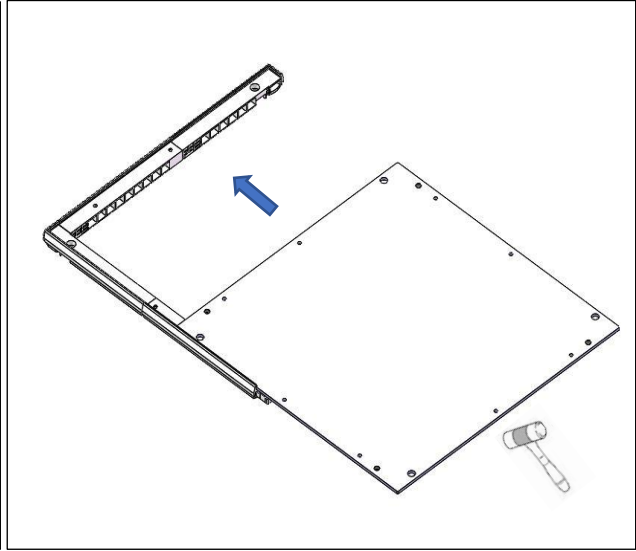
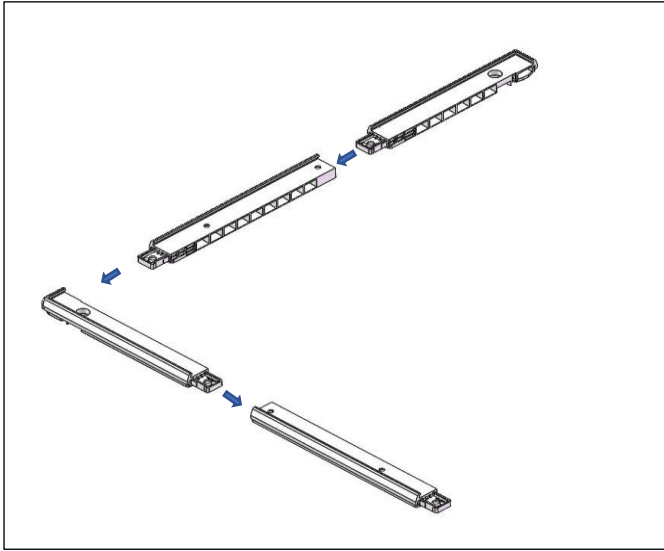
产品特征

安装步骤

维护保养

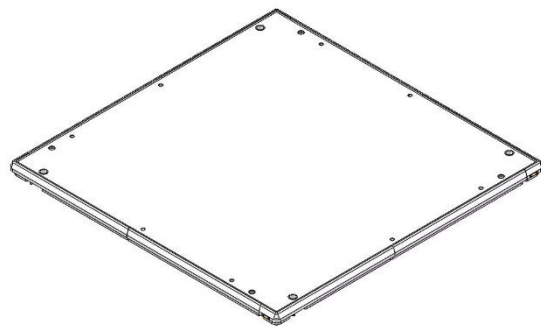
B When  $L \geq 480\text{mm}$ , the tray installation is shown in the following figure.

B 当  $L \geq 480\text{mm}$  的时候，托盘安装如下图所示。



Attention: Please use a dedicated pressing auxiliary core rod when installing the pin sleeve!

注意：销套安装的时候请用专用的压装辅助芯棒！



## Maintenance 维护和保养

The UTS series tray conveying system requires regular maintenance and upkeep to extend the service life of the line. The conveying equipment should be kept clean to avoid direct sunlight or rain or snow, and to prevent contact with substances such as acids, alkalis, oils, organic solvents, etc.

UTS 系列托盘输送系统需按周期进行规定的保养维护工作，以延长线体使用寿命。输送设备应保持清洁避免阳光直射或雨雪浸淋，防止与酸、碱、油类、有机溶剂等物质接触。维护前需关闭对应的能源供给。

1. Regularly wipe the Workpiece tray according to the usage environment. When wiping, soft cloth and towel should be used. It is strictly prohibited to use abrasive paper, wire brush, and other friction materials to wipe the surface of aluminum material. Warm water containing lubricants or neutral cleaning agents can be used for cleaning.

1、根据使用环境，定期擦拭工件托盘。擦洗时需用软布、毛巾，严禁使用砂纸、钢丝刷等摩擦物擦洗铝材表面。可采用含润滑剂或中性清洗剂的温水清洗。

2. During packaging and transportation, it is strictly prohibited to loosen the bulk truck to cause scratches.

2、在包装运输过程中严禁松散装车，造成刮擦。

3. Regularly inspect vulnerable parts. Check if the fasteners are loose and tighten them in a timely manner.

3、定期检查易损件。检查紧固件是否松动，及时拧紧。

### Disclaimer

#### 免责声明

The customer shall inspect the equipment regularly. If the customer fails to maintain the conveyor as the state above, leading to any malfunction or damage to the conveyor, our company will not be responsible for it, all related costs (including material costs, installation and commissioning fees, and hotel expense) shall be borne by the customer.

客户应定期对设备进行检查。若客户未按要求对输送机进行维护，进而导致输送机发生任何故障或损坏，我司将不承担相关责任，由此产生的相关费用（材料费，安装调试费，差旅费）均由客户承担。

Suzhou LinkedGo Transfer System Co.,Ltd.  
苏州领科工业技术有限公司

Tel: +86-512-6636 1885

Add: Room 706, Building D, Dongchuang Science and Technology Park,  
No. 216 Jinfeng Road, Wuzhong District, Suzhou, P.R. China

Zip code:215101

E-mail: [Sales@LinkedGo.com.cn](mailto:Sales@LinkedGo.com.cn)

Website: [www.LinkedList.com.cn](http://www.LinkedList.com.cn)

Subject to technical modifications

电话: +86-512-6636 1885

地址: 苏州市吴中区木渎镇金枫路 216 号东创科技园 D 幢 706 室

邮编: 215101

邮箱: [Sales@LinkedGo.com.cn](mailto:Sales@LinkedGo.com.cn)

网址: [www.LinkedList.com.cn](http://www.LinkedList.com.cn)

我司保留技术更改的权利